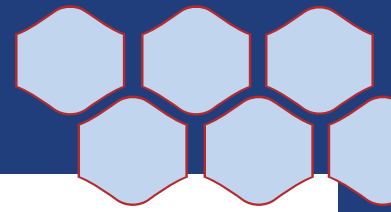


# ANNUAL ACHIEVEMENT REPORT 2022-23



FEWER STROKES. BETTER OUTCOMES

# Strategic priorities



As we approach the third year of our strategic plan, we are proud to acknowledge the numerous accomplishments that have propelled us towards our goal of establishing an integrated and responsive person-centred, evidence-informed stroke system. We extend our gratitude to our patient and family advisors for their valuable contributions and to our stakeholders for their commitment to advancing stroke care in this constantly evolving healthcare landscape.



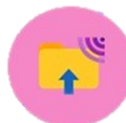
**Advance and support implementation of integrated stroke best practice care across the continuum**



**Optimize the use of virtual solutions and technology within the stroke system**



**Design and implement specialized community stroke teams / resources**



**Enhance seamless sharing of information and data collection across the stroke system**

# Data snapshot

## Regional Stroke Centres



# 1,285

code stroke transports to  
Regional Stroke Centres

(TPS, 2022-23)



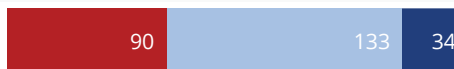
# 260

 walk-in stroke transports

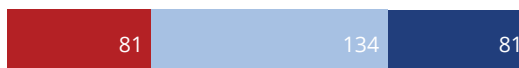
(TPS, 2022-23)



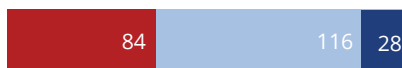
Toronto Western Hospital



Sunnybrook Health  
Sciences Centre



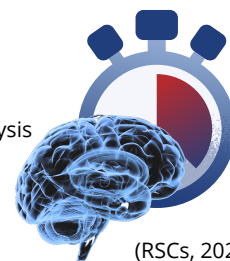
St Michael's Hospital



Thrombolysis

EVT

EVT and Thrombolysis



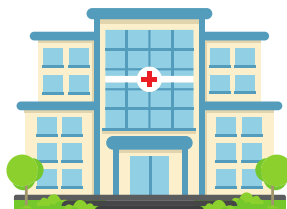
(RSCs, 2022-23)

## Acute Care

# 3,643

TIA/stroke  
admissions across 8  
acute care hospitals

(IDS 2022-23)



Range across sites in the  
proportion of stroke/TIA  
patients treated on a  
dedicated stroke unit

# 58% to 86%

(IDS 2022-23)

## Rehabilitation

# 1094

patients accessed high  
intensity rehab from  
acute care

(NRS 2022-23)

# 87%

of patients with AlphaFIM®  
40 – 80, ≤ 7 days post stroke,  
were automatically accepted  
to high intensity inpatient  
rehab

(eStroke 2022-23)

ACCEPT

Median rehab intensity across  
6 inpatient rehab programs:

# 66.5 mins/day

Range:  
43.6 to 106.5  
mins/day

(NRS (FY22/23 Q1-3))



## Community

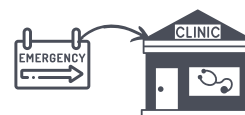
# 255

patients accessed  
outpatient rehab from  
acute care hospitals in  
Toronto

(eStroke 2022-23)



Proportion of ischemic stroke/TIA  
patients discharged directly from the ED  
and referred to secondary stroke  
prevention services ranged from:



# 67.4% → 100%

(IDS 2022-23)

# Initiative Highlights

## Advance and support implementation of integrated stroke best practice care across the continuum

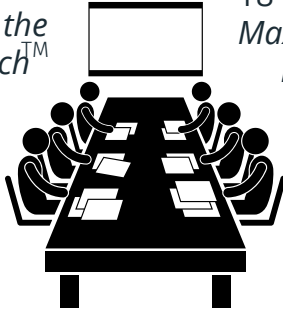
### Cognitive Orientation to Occupational Performance (CO-OP)



14 staff trained in  
*Introduction to the  
CO-OP Approach™*  
Workshop



18 staff trained in  
*Maximizing CO-OP  
Effectiveness*  
Workshop



**13** site specific  
champion meetings

### Patient and Family Advisors

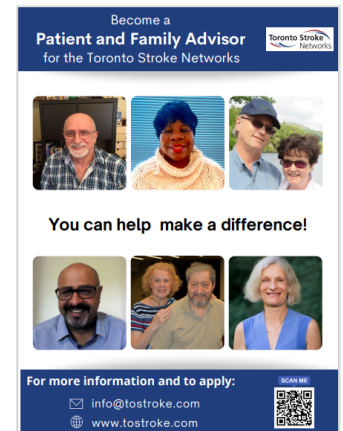
**16** Active Patient and Family Advisors

**12** Patient and Family Advisory  
Committee members

Advisors  
contributed to

**8**

initiatives at a local  
or provincial level



## Design and implement specialized community stroke teams / resources



### Virtual Community Forum

Inaugural event brought together:

**62** community care providers from  
**16** organizations

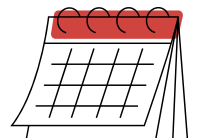


Identify tools and resources to  
enhance provider knowledge of  
Toronto's stroke system to better support persons  
with stroke and their families/caregivers in the  
community.

### Community Stroke Rehab Teams Early Supported Discharge Pilot

**2** Rehab programs participated in the  
early supported discharge pilot.

23 patients received 4 to 5  
days/week of high intensity  
rehab therapy.



**553**

total therapy visits

63 inpatient rehab days were saved





# Initiative Highlights

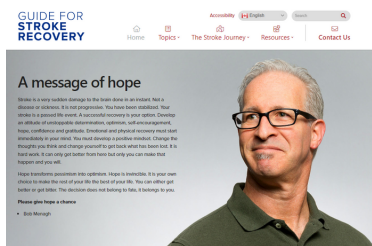
## Optimize the use of virtual solutions and technology within the stroke system

### Guide for Stroke Recovery Website



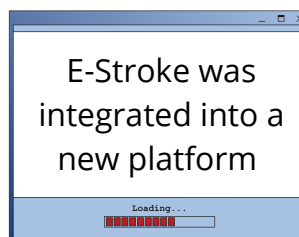
Accessibility features  
User-friendly design  
Content

3.2K new users, accessed from 95 + countries



*"I finally found information...I didn't know how to tell my doctor what I was experiencing. I looked for it, and found it."*

### eStroke Integration into Resource Matching & Referral System



E-Stroke was integrated into a new platform



It can link to other parts of the continuum as integrated stroke care continues to develop.



## Advance and support implementation of integrated stroke best practice care across the continuum

### Standards of Care

39

self-assessments and quality improvement plans from 16 organizations were submitted



9 Hyperacute



9 Acute



6 Inpatient Rehab



6 Outpatient Rehab



6 Secondary Prevention



3 Home & Community Care Support Services

### Integrated Care Data and Reporting Framework

7 programs participated in the pilot

- 2 acute care
- 2 inpatient rehabilitation
- 2 outpatient rehabilitation
- 1 integrated stroke unit



21 indicators collected across the continuum

## Canadian Occupational Performance Measure (COPM)® as a Patient Reported Outcome Measure

The COPM® is being implemented interprofessionally within:

6

acute care hospitals

5

rehab programs

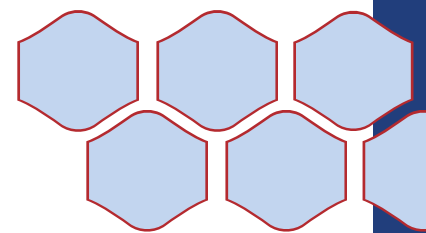
1

integrated stroke unit

Stroke teams were provided with:

- education sessions
- implementation resources
- virtual support sessions

Completed COPM® tools are shared through eStroke



## Data Sources

eStroke.....	eStroke
IDS .....	Integrated Decision Support
NRS .....	National Rehabilitation Reporting System
RSCs .....	Regional Stroke Centres
TPS .....	Toronto Paramedic Services

## The TSNs Regional Team

### North & East GTA Stroke Network

Beth Linkewich  
Kathy Golfinopoulos  
Brianna Iannazzo  
Sandy Lyeo  
Tina Sahota  
Yasmin Visram

### Toronto West Stroke Network

Nicola Tahair  
Nandanie Amarasinghe  
Donna Cheung  
Jocelyne McKellar  
Michelle Mohan

### South East Toronto Stroke Network

Fatima Quraishi  
Belinda Austria  
Jean Morrow  
Malaika Mvungi

## Steering Committee

Ilsa Blidner  
Rachel Boissonneault  
Dr. Leanne Casaubon  
Dr. Dan Cass

Ron LaCombe  
Kim Cook  
Beth Linkewich  
Cherie Madden

Dr. Thomas Parker  
Fatima Quraishi  
Orla Smith  
Tina Smith

Dr. Rick Swartz  
Nicola Tahair  
Susan Woollard  
Dr. Atif Zafar

More information on the TSNs, stroke care resources, and ongoing TSNs initiatives discussed in this report can be found at

[www.tostroke.com](http://www.tostroke.com)